

WBD ADVANCE

# Alternative business and legal solutions

[wbd-advance.com](http://wbd-advance.com)

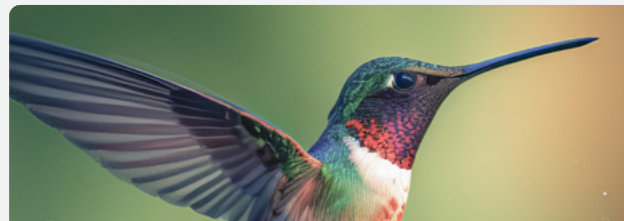
**WOMBLE  
BOND  
DICKINSON**  
A POINT OF VIEW LIKE NO OTHER

# OUR TALENT, YOUR TEAM

Our versatile team blends enhanced tech with best-in-class processes to elevate the delivery of our legal work, and help resolve wider complex business challenges.

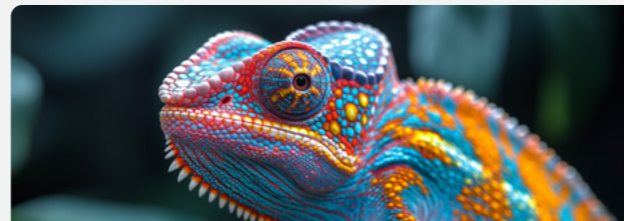
Whether for automation and process design or project and risk management, we work with you to unlock the most powerful and cost-effective solutions to your most challenging projects.

And that's a win-win.



## Agile collaborator

We work with you to develop seamlessly effective solutions, lightning quick.



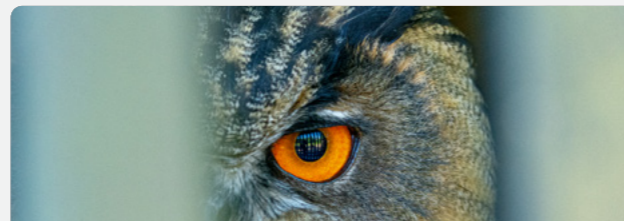
## Adaptation experts

Our team offers fully-flexible resourcing, with the talent, tools and tech to deliver.



## Efficiency optimisers

We design optimised processes to reduce waste, increase value and manage risk.



## Insightful innovators

Powered by pioneering tech, our expert strategic and commercial insight goes further.

# TEAMING WITH TALENT

Our highly adaptable team structure is at the beating heart of WBD Advance. Whether delivering one-off projects or on-going services, over 100 lawyers, technologists, analysts and ops professionals are ready to hit the ground running, supporting and empowering you when and where you need it most.

## Here's a snapshot of how we can help

- Delivering end-to-end services and bespoke solutions, for anything from large-scale document review and organisation, to support for litigation, contract redaction, banking security protection and company secretarial work.
- Our exceptional lawyers, paralegals and other professionals can provide expert resource on secondment when you need it most.
- Cutting-edge technology builds, integration and customisation, working with tools such as HighQ, DocuSign, Luminance, and many more.
- 360° real estate services, from title due diligence through to post-completion support, yet with a full range of additional tailored solutions such as planning agreements, grant administration and high-volume lease reviews.
- Proactive project management support across the board, both internally and for in-house clients, including service startups, process mapping, and service design.
- Debt recovery for utilities, banks and insolvency practitioners. Plus, we also defend consumer claims in the retail and hospitality sectors. You can find our debt recovery fees, here.
- Broad administration support, including triaging and matter maintenance, and client reporting, including analysis of data and design of reports.



# YOUR CUTTING EDGE IN AN EVER-CHANGING WORLD

Our depth of legal and technological expertise is vital. But it's our adaptability and insight at speed, designing and delivering the most effective solutions, that helps you win.

## Your business is facing change

It could be a regulator, legislation change, or a management request. But you need support and expertise that sits outside your team's usual remit and capacity.

This is where we come in. And together, we design a streamlined approach. Our project managers work closely alongside yours, capturing relevant data points, while our technologists enable the data recording, and our analysts review the data to provide meaningful reports – all while the required legal work is being undertaken.

## You've got a first-of-its-kind project

A new project has surfaced, with a clear objective, but there's no obvious way to deliver the brief. Yet, you do know that conventional legal advice isn't the answer.

That's why we operate a solutions first, services second approach; it means we treat every project uniquely. Drawing on all the legal expertise we have while technologists also scan for new developments or tools, provides a broad perspective of what's possible. We then design our team and solutions accordingly, giving us the clearest path to success.

## Your workload is too much

Perhaps a one-off project needs a varying upscale of support. And it needs to be managed effectively and consistently so that results don't dip and time doesn't slip.

This is where the beauty of our flexibility and adaptability shines. Whether you need a team at short notice, resourced according to project peaks, or even spread around the country, our ably-supported legal experts are at your fingertips – helping you reach your objectives quickly, smoothly and successfully

## You need long-term support

Those seemingly small, ongoing tasks that are critical to the smooth flow of your business need regular attention and resource. Yet your team is stretched.

Our hands-on expertise can lighten the load. With a depth of experience and insight, we develop and deliver effective, value-driven solutions that maintain peak standards on high-volume work, long-term. So you can stay focused on the bigger picture, safe in the knowledge that all those smaller fundamental tasks are always perfectly in hand.



## A SIGN OF SUCCESS

Singing our own praises is easy, so don't just take our word for it.

### Challenge

Recent ongoing work includes the negotiation, preparation and execution of planning agreements for a major infrastructure provider. To succeed, it was vital that we stepped into their shoes – working closely with their project managers and In-house lawyers to deliver agreements aligned to their policies.

### Solution

First, we listened to their explanations of (and frustrations with) their internal processes, before identifying how we would approach the same tasks, and how we could add value using structured process design and technology. We then priced our proposals attractively. Once appointed, our tech team built a HighQ-enabled portal for our client to securely transmit documents, utilising automated workflow and reporting to track the work.

### Challenge

A key client needed to significantly reduce their file storage. But, with tens of thousands of boxes that couldn't be destroyed due to the risk of losing vital information, they didn't know what to do, or even where to start. And they certainly didn't have the capacity to go through every box themselves. So, they approached us.

### Solution

First, we undertook a meta data review of the electronic file data that they did have, to give them near certainty on some of the files. We then set out a strategy to enable their internal team to investigate boxes at the most effective pace; the volume of boxes was almost halved as a result. We also helped by looking at a couple of thousand boxes ourselves, where no electronic file data existed, producing an inventory and recommendations on retention.



**Rachel Jones**  
Director, WBD Advance  
T: +44 (0)1752 677 677  
F: +44 (0)345 415 7900  
E: rachel.jones@wbd-uk.com

### That's enough about us

We'd love to discuss how we can help you. Contact Rachel Jones, Director, WBD Advance, today, and we'll arrange a time to talk.

Exclusively for in-house lawyers who want to stay ahead of the game, we regularly share our legal expertise and know-how at our Informed Counsel Events, live and online. And it's all for free.

### Why not join us?



# WBD Advance

Our talent, your team.

[wbd-advance.com](http://wbd-advance.com)