

x-mind optima 3D

The most compact CBCT
in the market, offering AI for life.*

Extraordinary clarity

The new sensor technology, combined with **90kV** and the advanced **ClearIQ** filter, boosts image quality to the next level.



Largest FOV in its Class

The comprehensive FOVs range from **5x5 to 17x12 cm**, makes it ideal for advanced orthodontics and maxillofacial surgery applications.



Smart Assistance & Automation

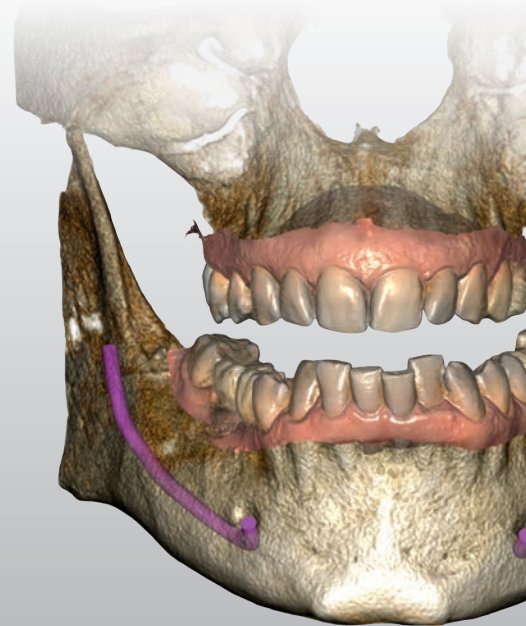
Equipped with our scalable and intuitive **Acteon Imaging Suite**® software and **RealGuide**™, implant and restorative planning is simplified through AI-driven automation.

All with no recurring software fees!



Built for Growth and ROI

X-Mind Optima 3D delivers a strong ROI by combining scalable cutting-edge technology, low maintenance costs, and enhanced diagnostic capabilities, helping you maximize efficiency, improve patient care, and grow your practice profitably over the long term.



Available in wall mount, floor
mount, and cephalometric options.



*AI features are implemented on RealGUIDE™ software, distributed with X-MIND optima 3D by ACTEON®

 **acteon**