

The Health Collaborative Situational Dashboard*

January 07, 2021

*This information is provided "as-is." The Health Collaborative and its partners make no representation or warranty, express or implied, including without limitation any warranties of merchantability, fitness for a particular purposes, non-infringement, or warranties as to the quality, accuracy, or completeness of the information. Any use or reliance on this information is at the user's sole risk.

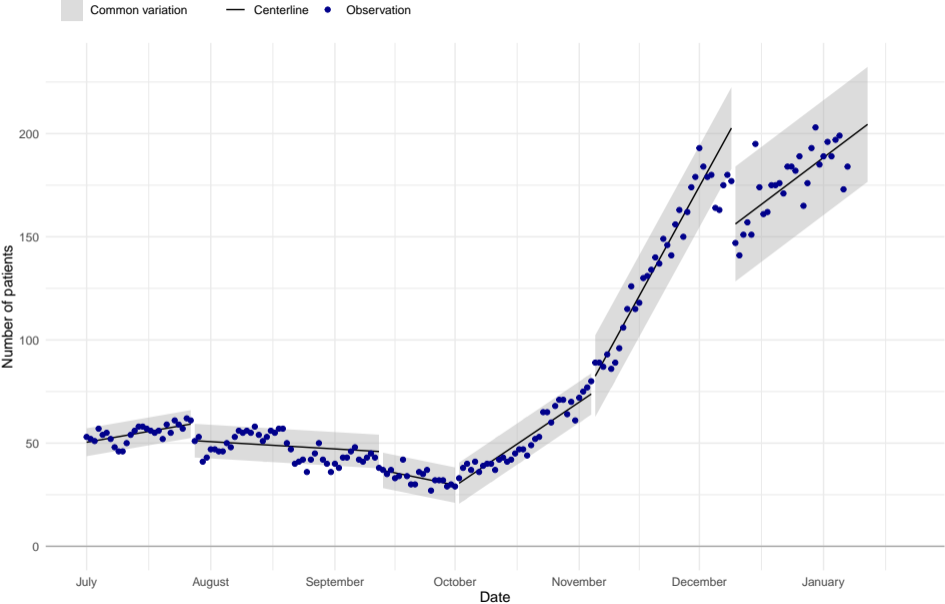
Hospital demand

Forecast demand

Mobility

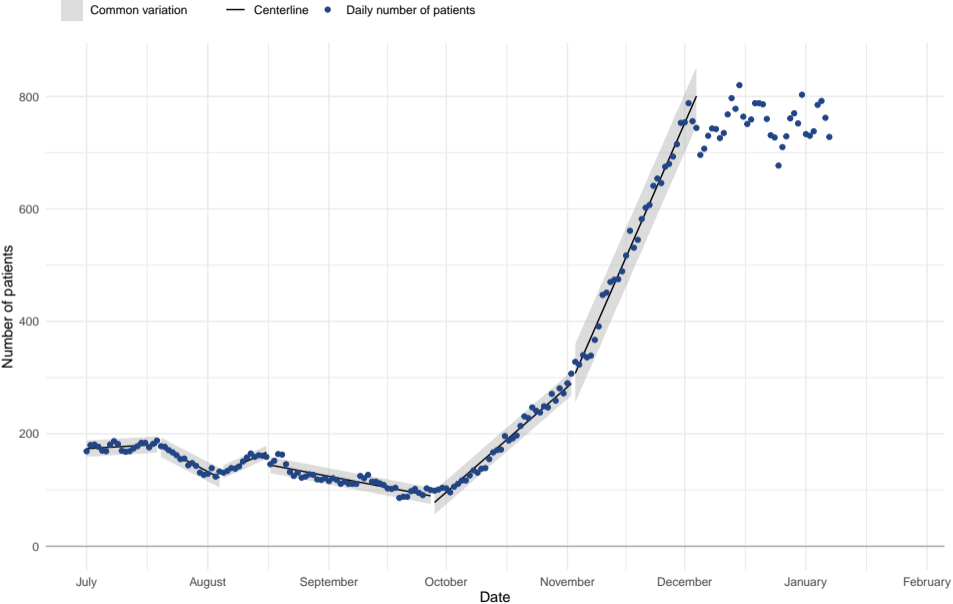
Hospital demand

Number of positive COVID-19 patients in Region 6 ICUs, I-Chart



Source: OHA Hospital Resource Tracker on January 7th

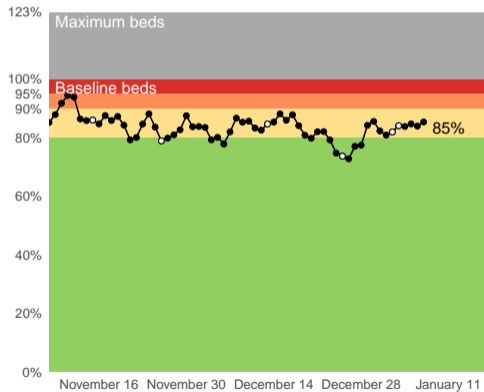
Number of positive COVID-19 patients in Region 6 hospitals, I-Chart



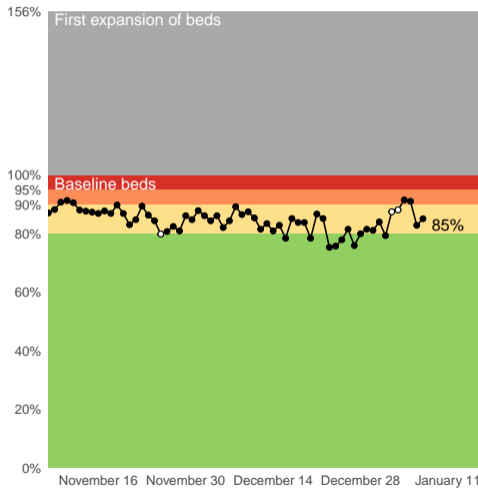
Source: OHA Hospital Resource Tracker on January 7th

Percentage of beds in use in Southwestern Ohio hospitals

Adult medical–surgical beds



Adult critical care beds

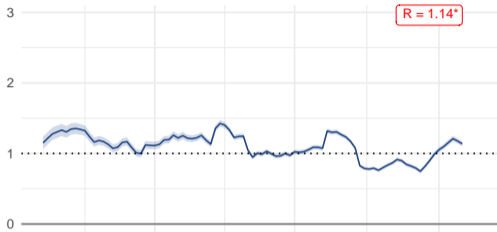


Source: SurgeNet data for Region 6 hospitals at 19:01 on January 7, 2021. Open circle indicates data for less than 90% of beds in SurgeNet.

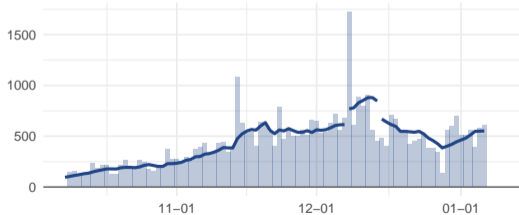
Forecast demand

Hamilton County, Ohio

Estimated R

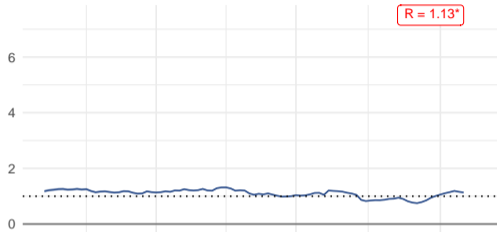


Daily incidence and seven day moving average

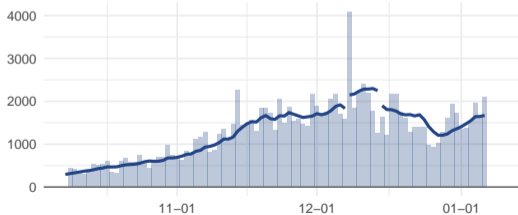


14 county area

Estimated R



Daily incidence and seven day moving average

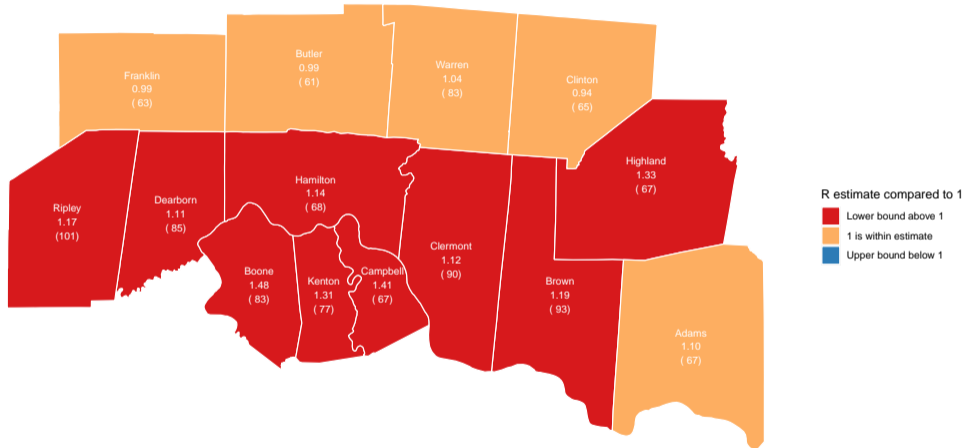


The break in the line for Ohio counties indicates a period impacted by the release of a large number of antigen results on 12-8; this period is not indicative of trends.

Mean serial interval (SI): 4.7 and standard deviation of SI: 2.9

Data from The New York Times, based on reports from state and local health agencies. Pulled on: 2021-01-07. <https://www.nytimes.com/interactive/2020/us/coronavirus-us-cases.html>

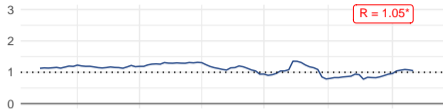
Map of R estimates for 14 county area with average daily number of cases per 100,000 population in the last week
Estimated R value is based on the rate of change in incidence cases and should be considered along with the count



Residual effects of a large release of cases on 12–8 artificially lowers the estimated R. Mean serial interval (SI): 4.7 and standard deviation of SI: 2.9. Data from The New York Times, based on reports from state and local health a <https://www.nytimes.com/interactive/2020/us/coronavirus-us-cases.html> Pulled: 2021-01-07

Ohio

Estimated R

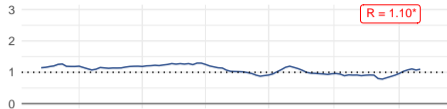


Daily incidence and seven day moving average

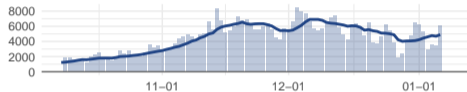


Indiana

Estimated R

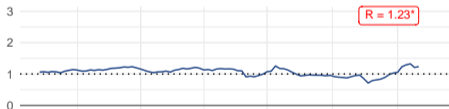


Daily incidence and seven day moving average



Kentucky

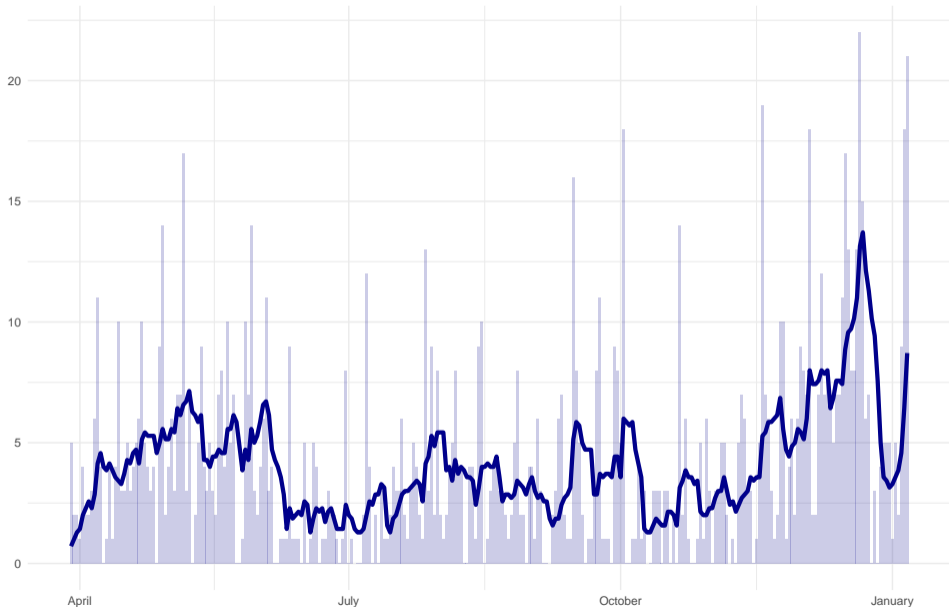
Estimated R



Daily incidence and seven day moving average

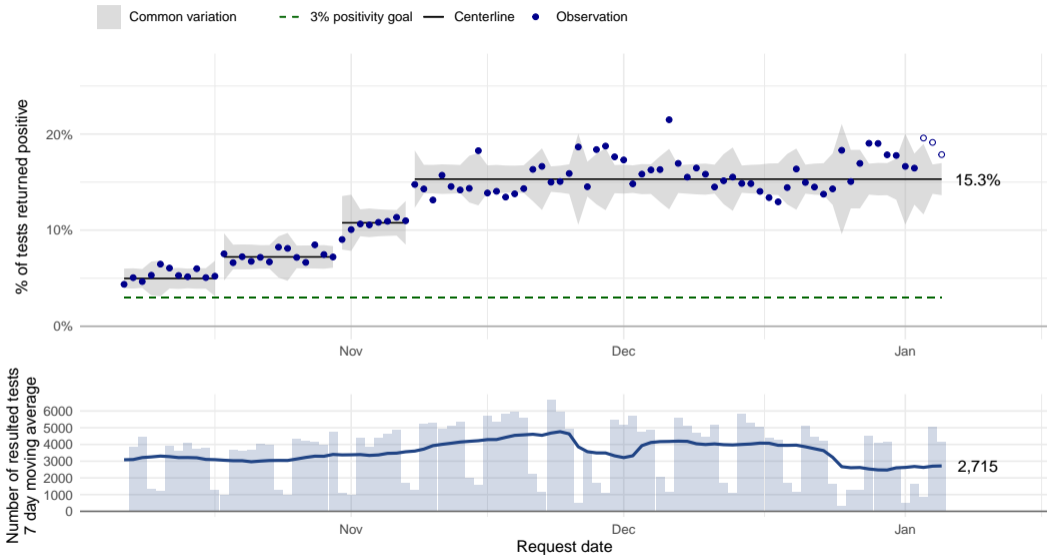


Number of COVID-19 deaths in 14 county area with 7 day moving average



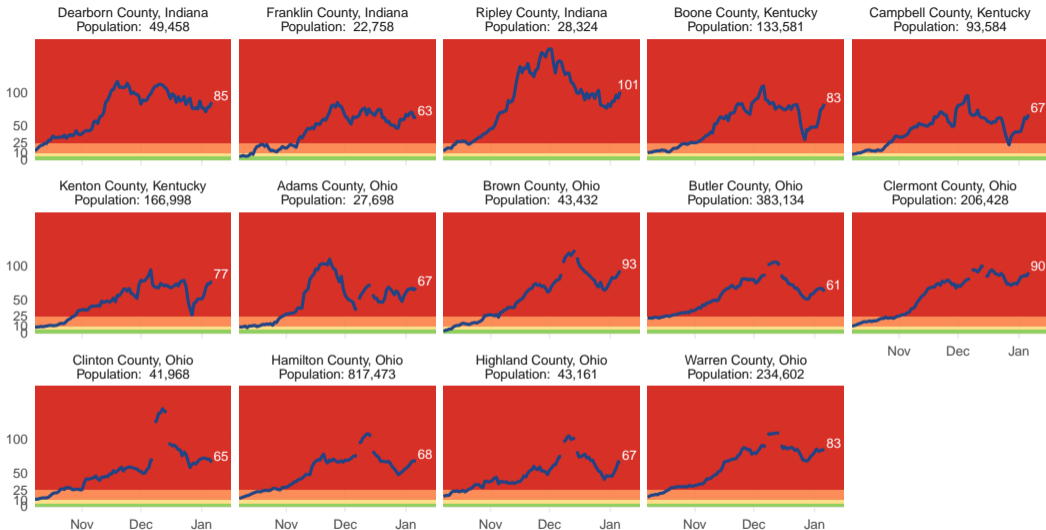
Data from The New York Times, based on reports from state and local health agencies.
Pulled on: 2021-01-07. <https://www.nytimes.com/interactive/2020/us/coronavirus-us-cases.html>

Percentage of test results returned positive in 14 county region



Open circles indicate points highly subject to change
Source: The Health Collaborative data as of 01/07/2021.

Seven day moving average of new Covid cases per 100,000 people in each county



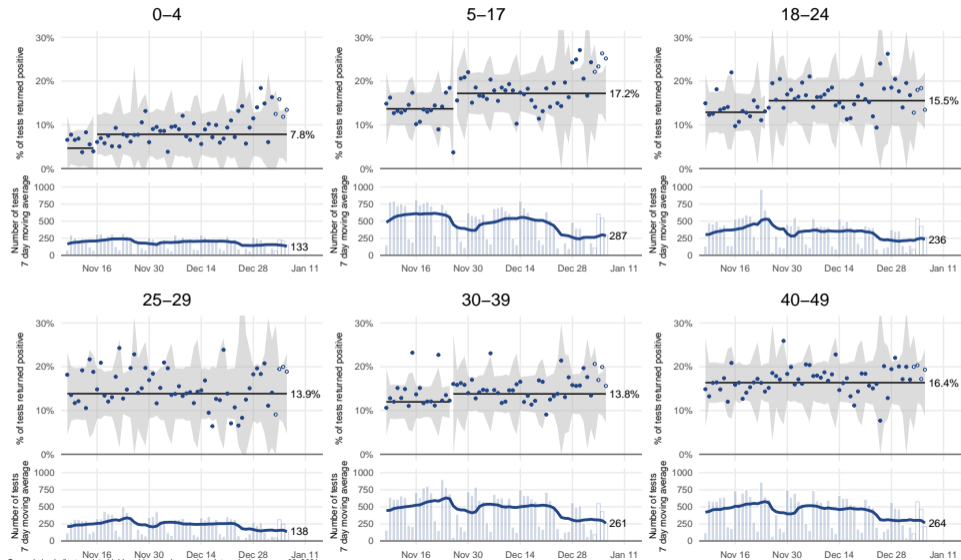
The break in the line for Ohio counties indicates a period impacted by the release of a large number of antigen results on 12-8; this period is not indicative of trends. Levels are <https://ethics.harvard.edu/tsi-technical-handbook>. Per local leadership, the lowest threshold for our region is being set at 5 cases per 100,000

Data from The New York Times, based on reports from state and local health agencies. <https://www.nytimes.com/interactive/2020/us/coronavirus-us-cases.html>

Pulled: 2021-01-07

Percentage of test results returned positive by age of patient for 14 county area

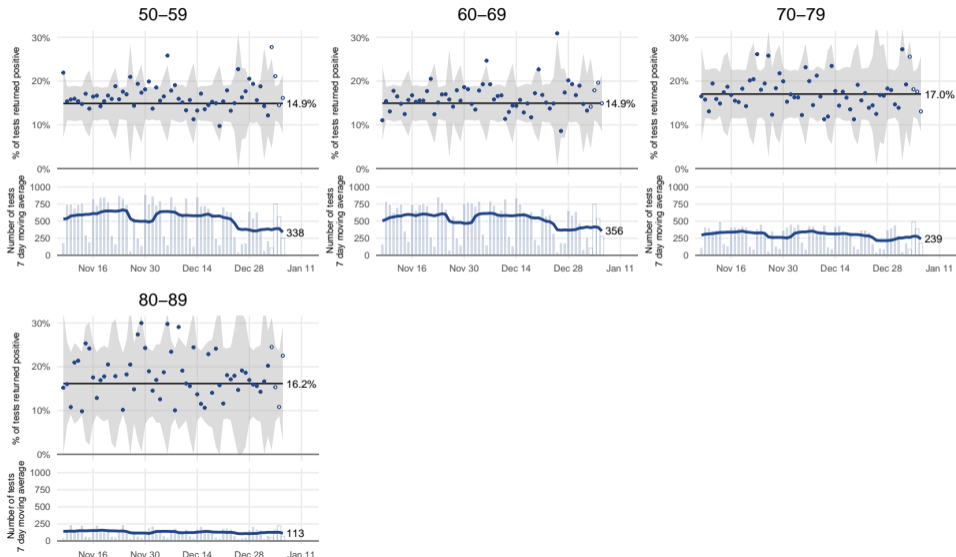
Common variation • % of test returned positive — Centerline



Open circles indicate points highly subject to change, last data point is January 06, 2021
 Source: The Health Collaborative data as of 01/07/2021.

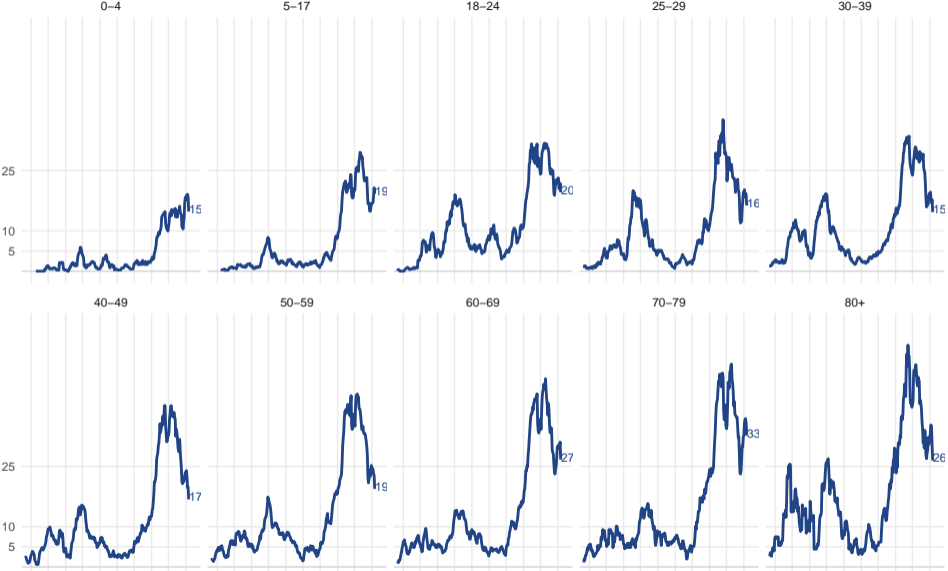
Percentage of test results returned positive by age of patient for 14 county area

Common variation • % of test returned positive — Centerline



Open circles indicate points highly subject to change, last data point is January 06, 2021
 Source: The Health Collaborative data as of 01/07/2021.

Seven day moving average of new Covid-19 positive tests per 100,000 by age group in Hamilton County



Source: The Health Collaborative as of 2021-01-07
 Population estimates from US Census Population Estimates Program, Vintage 2019

Mobility

Percentage change in weekday mobility in Hamilton County

