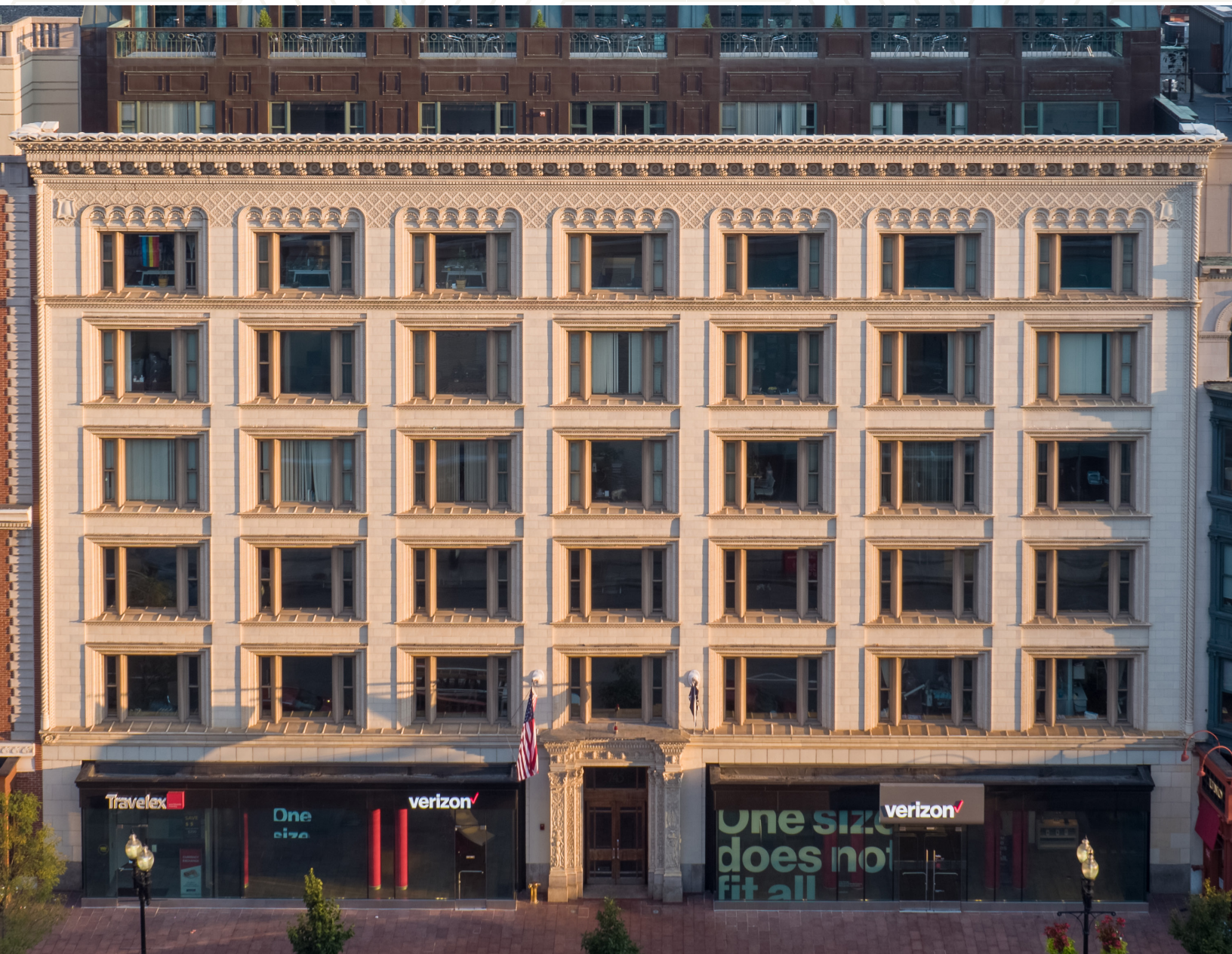




seven forty-five

BOYLSTON



745 Boylston St, Boston, MA 02116

Premier Back Bay Retail Location

+/- 100 Feet of Frontage on Boylston Street

 UPLAND
CAPITAL CORPORATION

NEWMARK

The Neighborhood

Back Bay



Back Bay offers a vibrant & convenient lifestyle with a mix of shopping, dining, cultural attractions, & outdoor spaces.

LOCATION & ACCESS

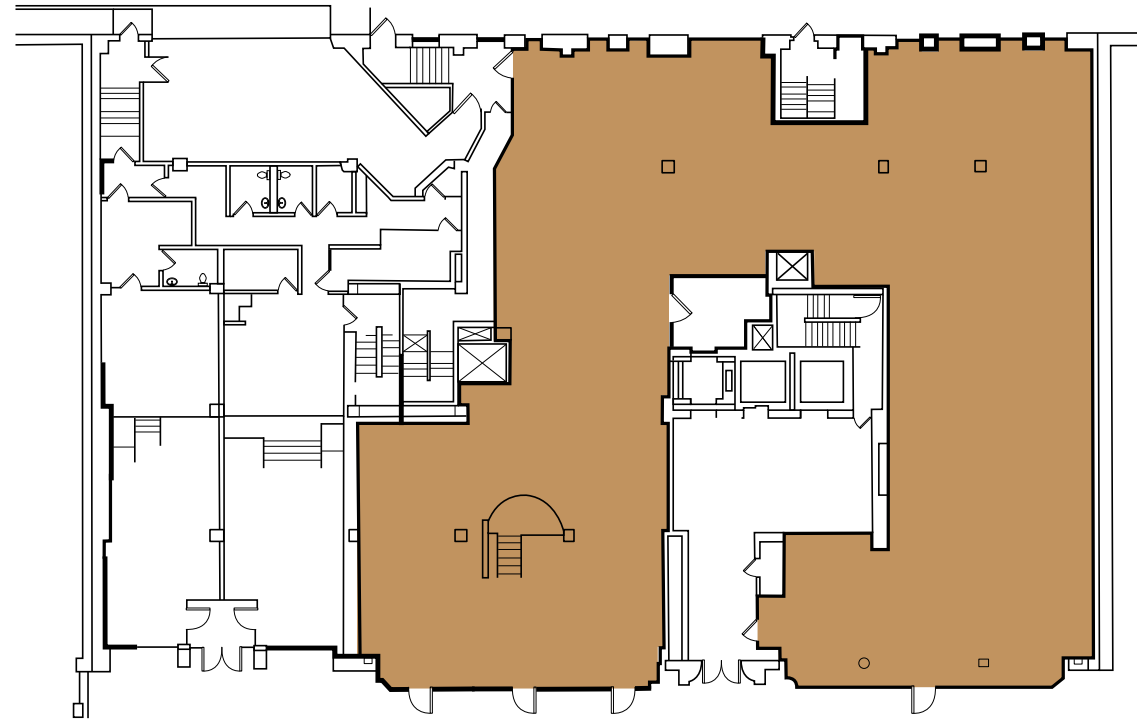
- 3 Min
Walk to Copley Station
- 6 Min
Walk to Prudential Station
- 5 Min
Drive to Storrow Drive
- 12 Min
Drive to Downtown Boston
- 13 Min
Drive to Logan Airport
- 18 Min
Drive to I-95

First Floor



First floor

8,606 SF

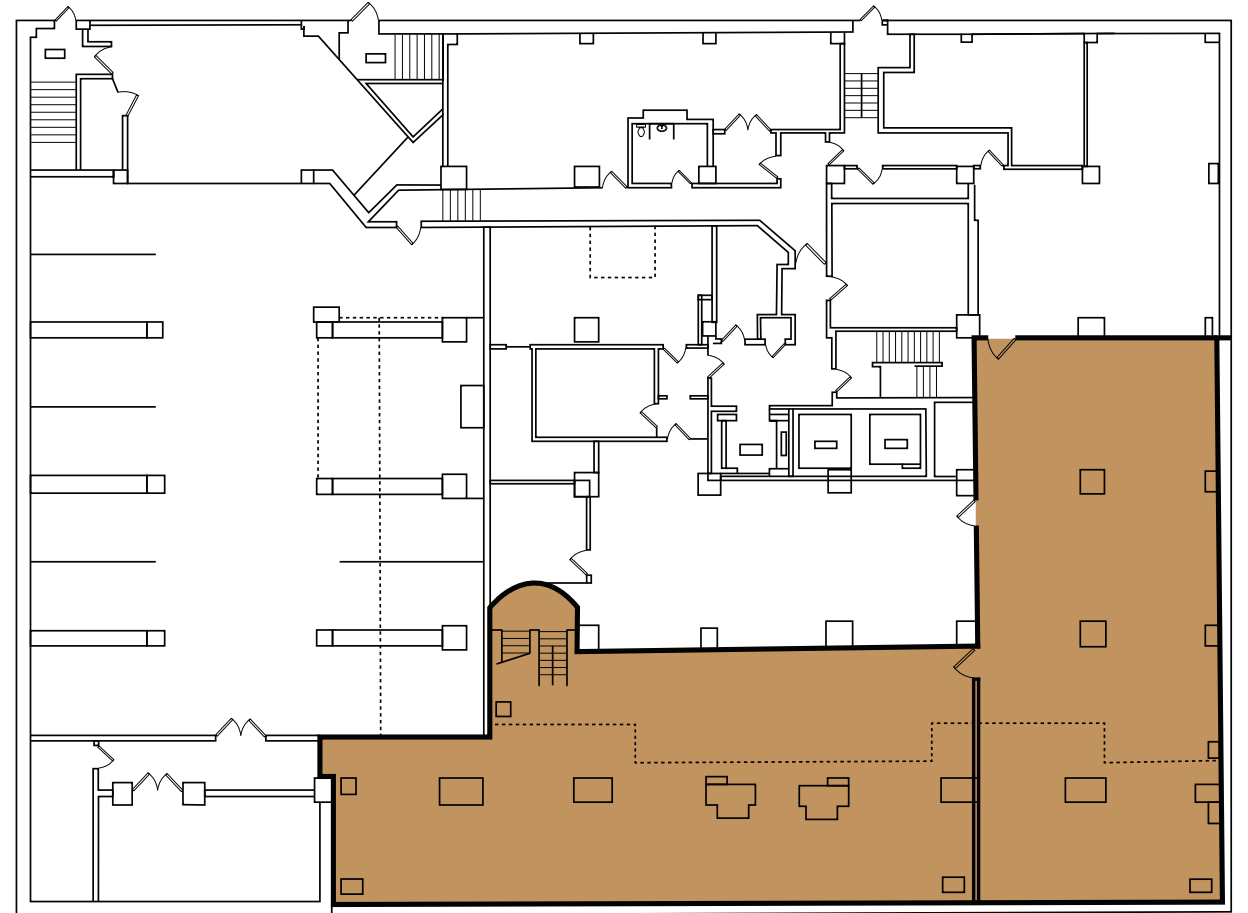


Lower Level



lower level

4,833 SF





Matt Curtin
Matt.Curtin@nrmk.com
617.863.8630

Greg Covey
Greg.Covey@nrmk.com
617.863.8459

Nicole Nielsen
nicole.nielsen@nrmk.com
617.863.8463

 UPLAND
CAPITAL CORPORATION

NEWMARK